

# Key information required

**1** Name of company

**2** Name of contact/work experience supervisor

**3** Email for contact

**4** Phone number for contact

**5** Public liability insurance number

**Deadline: 20th May**

**WORK EXPERIENCE**

**8-12 July**

Students participate in a full week of work experience.



# WHY WORK EXPERIENCE?

Provides students with an insight into the world of work.

Gives students an opportunity to showcase and develop their skills and motivation as an individual.

Enables students to build a foundational relationship with a local employer and possibly make a lasting impression.

## HOW CAN I HELP MY CHILD FIND A PLACEMENT?

### 1. BRAINSTORM

Spend some time discussing options with your child. Try completing the work experience survey together, or doing on an online careers quiz for ideas.



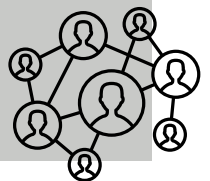
### 2. FAMILY AND FRIENDS

Chat to family and friends about their career paths and see if anyone has interesting connections to follow.



### 3. NETWORK

Active networking in person and online using social media sites including Twitter, Facebook and LinkedIn to follow companies and post about looking for work experience.



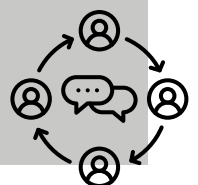
### 4. RESEARCH

Research using the internet, look in the local paper for employers based nearby who might be able to provide placement.



### 5. COMMUNICATE WITH SCHOOL

Encourage your child to talk to teachers at school in subjects which link to careers they are excited about.



ANY QUESTIONS?

CONTACT MISS BOWEN (CAREERS LEAD)

EMAIL: [CAREERS@STMARKS.ANTHEMTRUST.UK](mailto:CAREERS@STMARKS.ANTHEMTRUST.UK)

OR CALL 020 8648 6627